

GA[®]
GUARDIAN ANGEL



2022-23
CATALOG

GuardianAngelDevices.com

ABOUT GA

Guardian Angel™ devices are designed with a core belief that personal lighting technology makes the world a safer place. Our mission is to save lives by developing innovative, high-tech wearable safety devices that are rugged enough to stand on the front line with law enforcement and first responders, yet practical and versatile enough to be a must-have tool for all roadside professionals, construction sites or outdoor adventures.



MULTI-USE PERFORMANCE UNDER ANY CONDITION

The Guardian Angel™ comes standard with a patented Magnetic Mounting System which includes a built in neodymium rare earth magnet as well as a corresponding rare earth magnetic mount. The bond formed between these two magnets exerts an impressive 20 pounds of magnetic force when contacted. This innovative system allows the Guardian Angel to be mounted to nearly anything.



**YOUR PERSONAL SAFETY DEVICE SHOULD BE AS RELIABLE
AS YOUR WORD AND AS STRONG AS YOUR WORK ETHIC**

**ALL DEVICES ARE
EQUIPPED WITH A
BUILT IN NEODYMIUM
RARE EARTH MAGNET**

A PATENTED MAGNET MOUNTING SYSTEM
USING 20 LBS FORCE OF RARE EARTH MAGNET



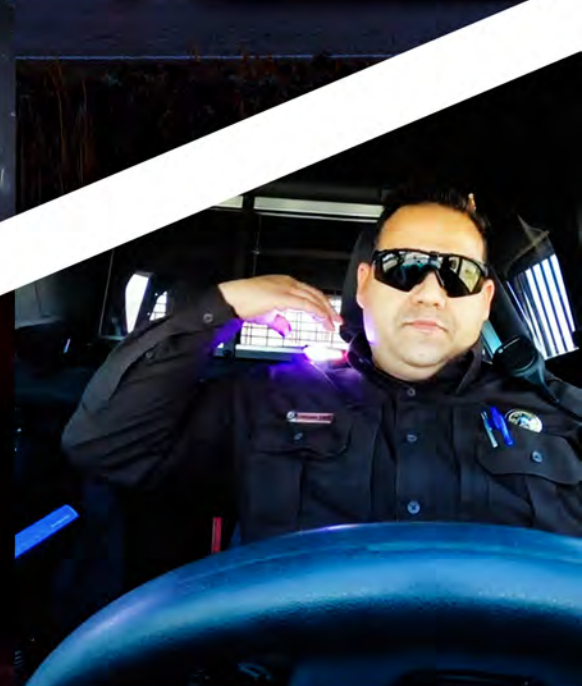
**ALL MOUNTING
ACCESSORIES ARE EQUIPPED
WITH A BUILT IN NEODYMIUM
RARE EARTH MAGNET**

UNIQUE DESIGN WHICH FITS ALL
DEVICES (MALE END) SECURELY ONTO
ACCESSORIES (FEMALE END).



READY FOR THE JOB EVERY TIME

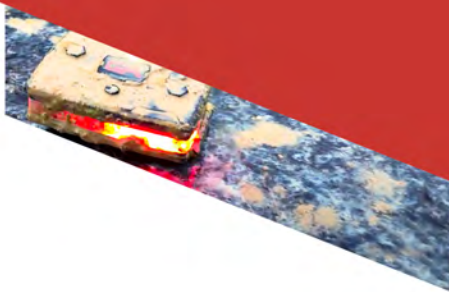
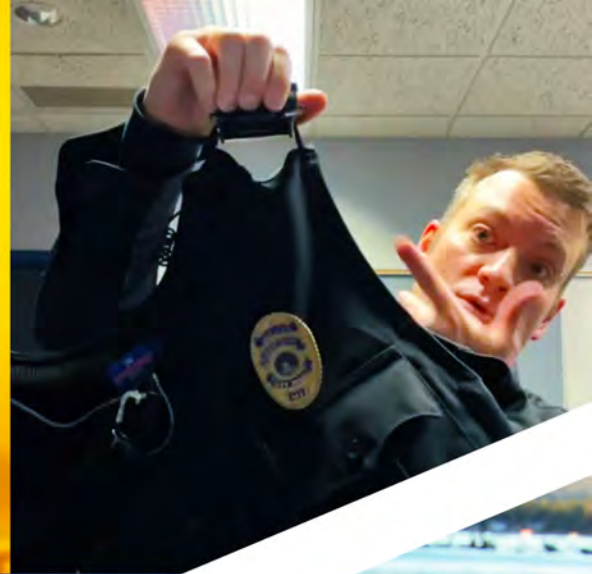
It's all in a day's work. The Guardian Angel™ device is virtually indestructible, anywhere, anytime, providing safety that lasts. Depend on Guardian Angel to be ready to go with you, hour after hour, shift after shift. Each device is a trusted companion that keeps you visible, lights your way and guides you home safely.



BUILT TOUGH

YEAH, WE'VE *TRIED* TO BREAK IT

IP68 Rated, durable, shockproof, water and dustproof, and able to withstand extreme work and weather conditions. Drop tested at 500 feet and still completely functional.



ELITE SERIES PRODUCT SPECS:



- PRODUCT NAME** — Guardian Angel™ Elite™ Series LED Light Bar
- LIGHT SOURCE** — 18 LED'S
- COLORS** — Red, White, Blue, Yellow, Green, Orange, Infrared
- BRIGHTNESS** — Up to 800 lumens (varies by model),
5+ Miles Visibility
- SIZE** — 2.75"W x 1.87" L x 1.0" H
- WEIGHT** — 3.25oz, 92.4g
- BATTERY** — **Type:** Rechargeable Lithium Polymer Battery
Capacity: 1400mAh / 5.18Wh
Charging Time: Approx. 1.5 hrs
Normal Voltage: 3.7V
Certification: UN38.3, IEC62133, CE, RoHS Compliant
Battery Life hr/charge: Varies based on
brightness setting & light mode. 1.5 – 150 hours
Battery Life Cycle: 1500 – 3000 cycles
- CHARGING** — **Connector:** Type C USB
Input: AC 100-240V - 50/60Hz. 0.6A
Output: 5.0V - 2000mA
- CASING** — **Material:** Polycarbonate Lens, Glass Filled
Polycarbonate Exterior Covers and USB Door,
High Temperature Rubber Buttons & Water Seals
IP Rating: IP68 Water/Dust Proof Rating
Flammability Rating: UL 746B, UL94
- MOUNTING** — Neodymium iron boron Grade NB42 magnets
- ENVIRONMENT** — **Operational Temp & Humidity:** -40C°- 110C°
Storage Temp & Humidity: 20-28C°

GA EMERGENCY MODE

- 1st Press= All LEDs Flashing
- 2nd Press= OFF
- Hold= Scrolling Sequence (Push Again to Turn Off)

TETHER ATTACHMENT

Tether Accessory Attachment

BRIGHTNESS SETTINGS

Max, High, Medium, Low or SOS Light Pattern

TOP LED

Enhanced Spotlight Lens with Dedicated Button

- 1st Press= Constant On
- 2nd Press= Constant Flash
- 3rd Press= OFF

CHARGING PORT

Rechargeable Type-C USB Charging Port

DURABLE

Waterproof, Dustproof, Shockproof, IP68 Rated



FRONT LED'S

- 1st Press= Constant On
- 2nd Press= Constant Blinking
- 3rd Press= Scrolling Sequence
- 4th Press= OFF
- Hold On/Off = All Front LED'S

REAR LED'S

- 1st Press= Constant On
- 2nd Press= Constant Blinking
- 3rd Press= Scrolling Sequence
- 4th Press= OFF
- Hold= Battery Level Indicator

WORK LIGHT

- 1st Press= Single LED On
- 2nd Press= OFF
- Hold= Standard Operating Mode (All Front LED's On, Rear LED's Flashing)

BUILT IN MAGNET

Super Strong Built-in Rare Earth Magnet Mounting System (on underside)



ELITE SERIES - STANDARD LE



RED/BLUE | SKU: ELT-R/B



BLUE/BLUE | SKU: ELT-B/B

- Built-in Rare Earth magnet with corresponding Rare Earth magnet mount
- 18 high powered LED's
- Red LED - single low light work light
- Lithium-ion rechargeable battery with Type-C charging cable
- 4 brightness modes
- SOS flash pattern
- Battery indicator light bar
- Independent front and rear light controls





ELITE SERIES - SPLIT & SOLID COLOR BEACON



GREEN/GREEN
SKU: ELT-G/G



RED/RED
SKU: ELT-R/R



YELLOW/YELLOW
SKU: ELT-Y/Y



WHITE/RED
SKU: ELT-W/R



WHITE/YELLOW
SKU: ELT-W/Y



GREEN/YELLOW
SKU: ELT-G/Y



RED/YELLOW
SKU: ELT-R/Y

- Built-in Rare Earth magnet with corresponding Rare Earth magnet mount
- 18 high powered LED's
- White Work Light with center focused light
- Lithium-ion rechargeable battery with Type-C charging cable
- 4 brightness modes
- SOS flash pattern
- Battery indicator light bar
- Independent front and rear light controls



ELITE SERIES - ALL WHITE FRONT



WHITE/WHITE
SKU: ELT-W/W



WHITE/RED
SKU: ELT-W/R



WHITE/GREEN/YELLOW
SKU: ELT-W/GY



WHITE/YELLOW
SKU: ELT-W/Y



WHITE/GREEN
SKU: ELT-W/G



WHITE/BLUE/YELLOW
SKU: ELT-W/BY



WHITE/ORANGE
SKU: ELT-W/O



WHITE/WHITE/RED
SKU: ELT-W/WR



WHITE/WHITE/YELLOW
SKU: ELT-W/WY



WHITE/RED/YELLOW
SKU: ELT-W/RY



- Built-in Rare Earth magnet with corresponding Rare Earth magnet mount
- 18 high powered LED's
- Red LED - single low light work light
- Lithium-ion rechargeable battery with Type-C charging cable
- 4 brightness modes
- SOS flash pattern
- Battery indicator light bar
- Independent front and rear light controls



ELITE SERIES LE/IR HYBRID



RED/BLUE | SKU: ELT-R/B-IR



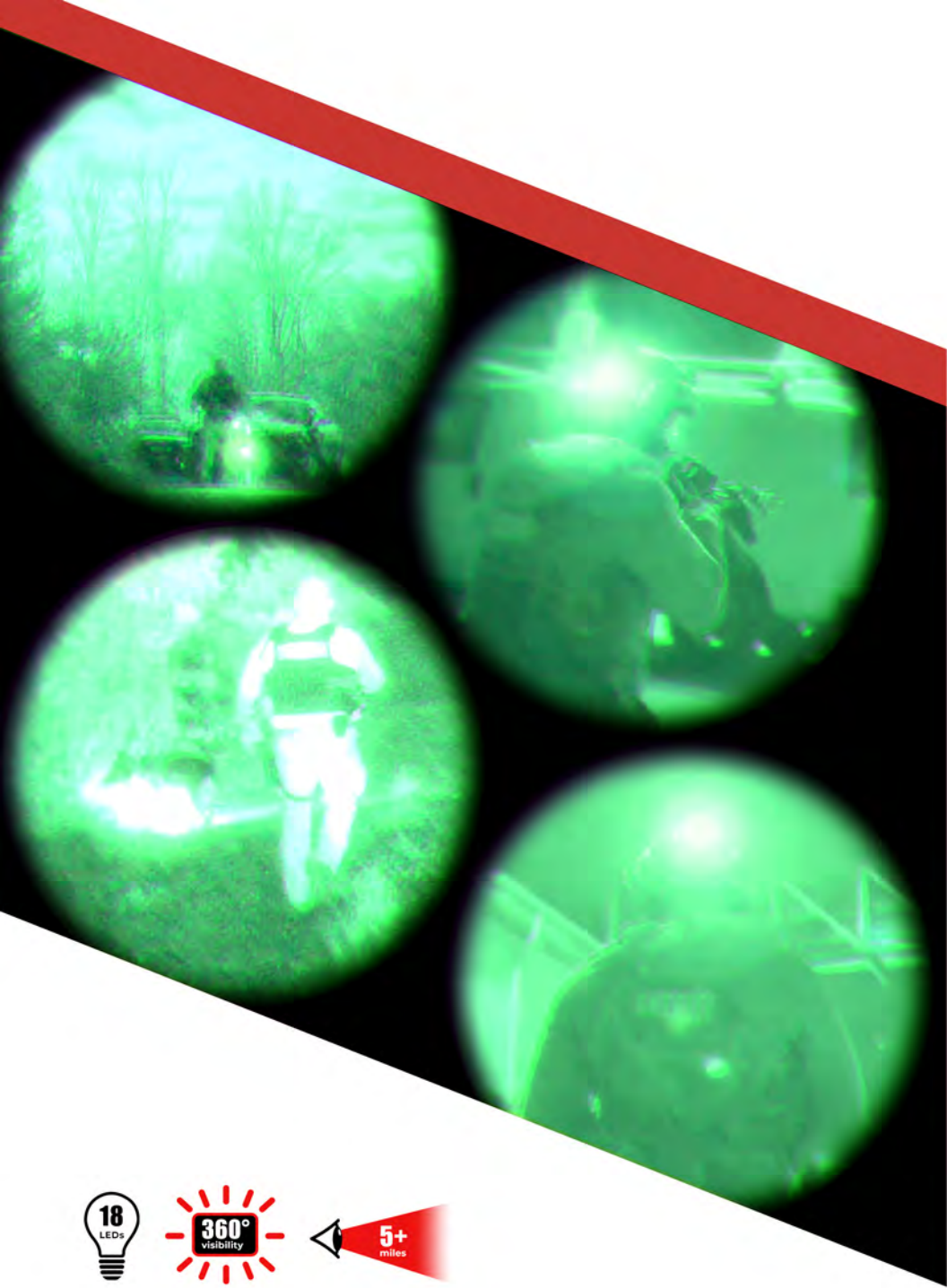
BLUE/BLUE | SKU: ELT-B/B-IR



WHITE/RED | SKU: ELT-W/R-IR

- Built-in Rare Earth magnet with corresponding Rare Earth magnet mount
- Top-light: Independently controlled single 850 nano meter infrared LED
- 18 high powered LED's
- Red LED - single low light work light
- Lithium-ion rechargeable battery with Type-C charging cable
- 4 brightness modes
- SOS flash pattern
- Battery indicator light bar
- Independent front and rear light controls





ELITE SERIES - ALL INFRARED UNIT



ALL INFRARED | SKU: ELT-IR

- Built-in Rare Earth magnet with corresponding Rare Earth magnet mount
- Independently controlled 940 nano meter infrared LEDs
- 18 high powered LED's
- Lithium-ion rechargeable battery with Type-C charging cable
- 4 brightness modes
- SOS flash pattern
- Battery indicator light bar
- Independent front and rear light controls





ELITE SERIES OUTDOOR / MULTI-FUNCTIONAL



RED/GREEN | SKU: ELT-R/G



WHITE/WHITE | SKU: ELT-W/W



ORANGE/ORANGE | SKU: ELT-O/O

- Built-in Rare Earth magnet with corresponding Rare Earth magnet mount
- 18 high powered LED's
- Work Button - Independently controls (3) Front Red LED's and (2) White LED's
- Lithium-ion rechargeable battery with Type-C charging cable
- 4 brightness modes
- SOS flash pattern
- Battery indicator light bar
- Independent front and rear light controls



MICRO SERIES PRODUCT SPECS:



PRODUCT NAME → Guardian Angel™ Micro™ Series LED Light Bar

LIGHT SOURCE → 11 LEDs

COLORS → Red, White, Yellow, Green, Orange, Infrared

BRIGHTNESS → Up to 500 lumens (varies by model),
3+ Miles Visibility

SIZE → 1.99"W x 1.72"L x 0.68"H

WEIGHT → 2.0 oz, 56.70g

BATTERY → **Type:** Rechargeable Lithium Polymer Battery
Capacity: 500mAh / 1.85Wh
Charging Time: Approx. 3.7 hrs
Normal Voltage: 3.7V
Certification: UN38.3, IEC62133, CE, RoHS Compliant
Battery Life hr/charge: Varies based on
brightness setting & light mode. 2 – 150 hours
Battery Life Cycle: 1500 – 3000 cycles

CHARGING → **Connector:** Type C USB
Input: AC 100-240V - 50/60Hz. 0.6A
Output: 5.0V - 1000mA

CASING → **Material:** Polycarbonate Lens, Glass Filled
Polycarbonate Exterior Covers and USB Door,
High Temperature Rubber Buttons & Water Seals
IP Rating: IP67 Water/Dust Proof Rating
Flammability Rating: UL 746B, UL94

MOUNTING → Neodymium iron boron Grade NB42 magnets

ENVIRONMENT → **Operational Temp & Humidity:** -40C°- 110C°
Storage Temp & Humidity: 20-28C°

TETHER ATTACHMENT

Tether Accessory Attachment

BRIGHTNESS SETTINGS

Max, High, Medium, Low or SOS Light Pattern

GA EMERGENCY MODE

- 1st Press= All LEDs Flashing
- 2nd Press= OFF
- Hold= Scrolling Sequence (Push Again to Turn Off)

REAR LED'S

- 1st Press= Constant On
- 2nd Press= Constant Blinking
- 3rd Press= Scrolling Sequence
- 4th Press= OFF
- Hold= Battery Level Indicator

DURABLE

Waterproof, Dustproof, Shockproof, IP67 Rated

WORK LIGHT

- 1st Press= Single LED On
- 2nd Press= OFF
- Hold= Standard Operating Mode (All Front LED's On, Rear LED's Flashing)

BUILT IN MAGNET

Super Strong Built-in Rare Earth Magnet Mounting System (on underside)

FRONT LED'S

- 1st Press= Constant On
- 2nd Press= Constant Blinking
- 3rd Press= Scrolling Sequence
- 4th Press= OFF
- Hold On/Off = For Top LED

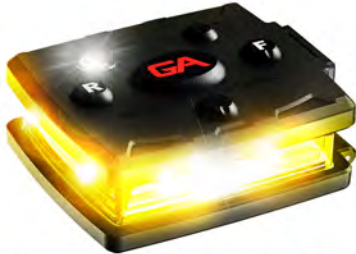
CHARGING PORT

Rechargeable Type-C USB Charging Port (on side)





MICRO SERIES - SPLIT & SOLID COLOR BEACON



YELLOW/YELLOW | SKU: MCR-Y/Y



ORANGE/ORANGE | SKU: MCR-O/O



RED/RED | SKU: MCR-R/R



GREEN/GREEN | SKU: MCR-G/G



RED/GREEN | SKU: MCR-R/G

- Built-in Rare Earth magnet with corresponding Rare Earth magnet mount
- 11 high powered LED's
- Lithium-ion rechargeable battery with Type-C charging cable
- 4 brightness modes
- SOS flash pattern
- Battery indicator light bar
- Independent front and rear light controls





MICRO SERIES - ALL WHITE FRONT



WHITE/ORANGE | SKU: MCR-W/O



WHITE/GREEN | SKU: MCR-W/G



WHITE/RED | SKU: MCR-W/R



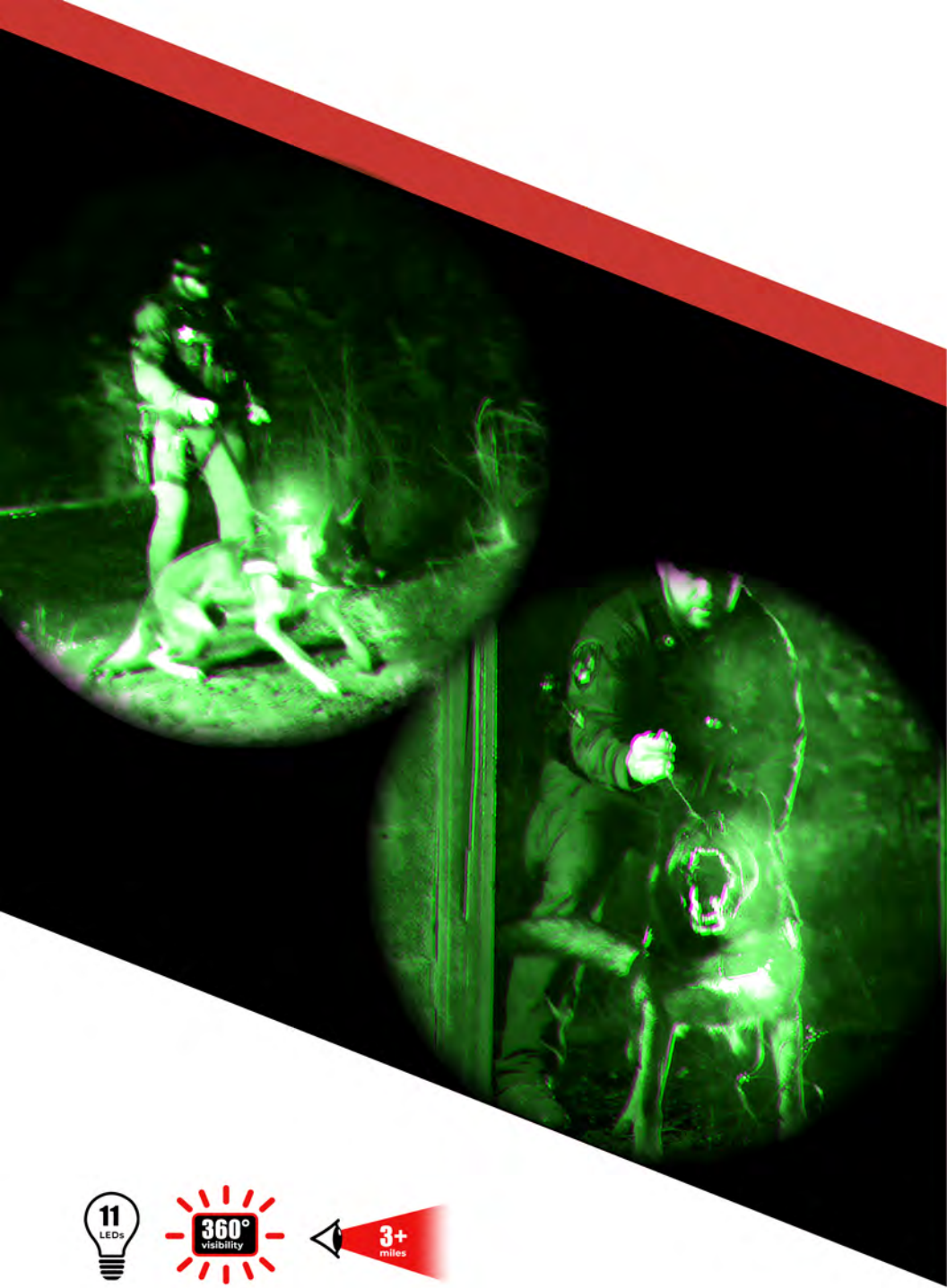
WHITE/YELLOW | SKU: MCR-W/Y



WHITE/WHITE | SKU: MCR-W/W



- Built-in Rare Earth magnet with corresponding Rare Earth magnet mount
- 11 high powered LED's
- Lithium-ion rechargeable battery with Type-C charging cable
- 4 brightness modes
- SOS flash pattern
- Battery indicator light bar
- Independent front and rear light controls



MICRO SERIES - ALL INFRARED UNIT



ALL INFRARED | SKU: MCR-IR

- Built-in Rare Earth magnet with corresponding Rare Earth magnet mount
- Top light: Independently controlled single 850 nano meter infrared LED
- Side lights: Independently controlled 940 nano meter infrared LEDs
- 11 high powered LED's
- Lithium-ion rechargeable battery with Type-C charging cable
- 4 brightness modes
- SOS flash pattern
- Battery indicator light bar
- Independent front and rear light controls



MOUNTING OPTIONS & ACCESSORIES

* INCLUDES RARE EARTH MAGNET MOUNTING SYSTEM



VELCRO CLIP MOUNT*



PICATINNEY RAIL MOUNT*



HELMET RAIL MOUNT*



SMALL UNIVERSAL CLIP MOUNT*



CLAMP ON STRAP MOUNT*



STABILIZER CLIP MOUNT*



HARD HAT MOUNT*



NONMETALLIC SURFACE MOUNT*



DEVICE TETHER SHORT



DEVICE TETHER LONG



STRAP/EPAULET MOUNT*



UNIVERSAL CLIP MOUNT*



ROTATABLE BIKE MOUNT*



RUBBER BIKE/RAIL STRAP MOUNT*



SUCTION CUP MOUNT*



MAGNETIC CONE MOUNT*



BIKE/RAIL STRAP MOUNT*



JAW CLIP SPRING MOUNT*



ARM STRAP MOUNT* SHORT



ARM STRAP MOUNT* LONG



REPLACEMENT BASE WEARABLE MAGNETIC MOUNT*



MAGNET MOUNT REPLACEMENT BASE*



AC ADAPTOR WITH TYPE-C OR MICRO USB CABLE



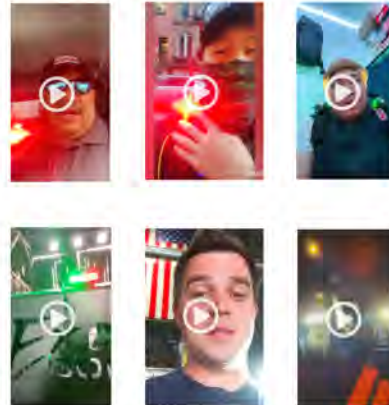
CAR CHARGER WITH TYPE-C OR MICRO USB CABLE

6,200 REVIEWS & COUNTING

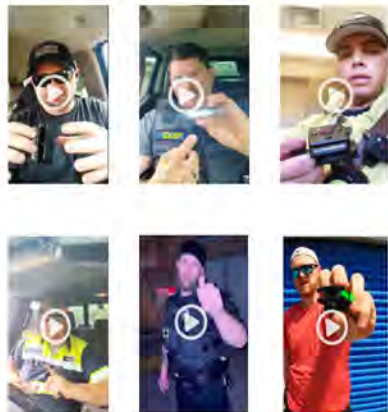
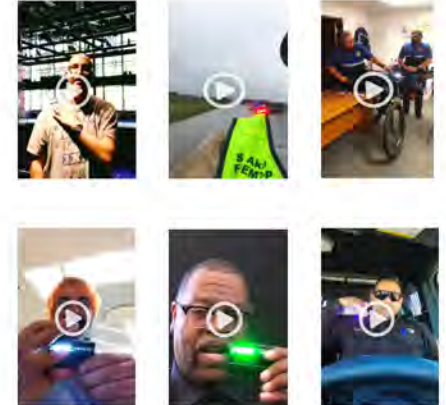


HEAR STRAIGHT FROM THE SOURCE WHY WE'RE AMERICA'S MOST-TRUSTED SAFETY LIGHT

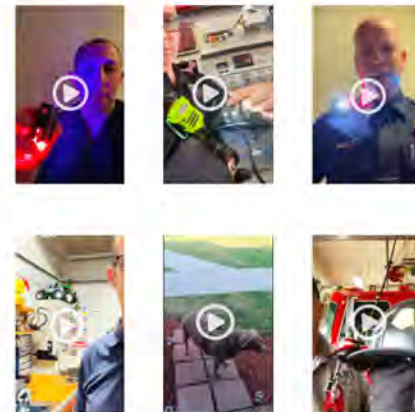
“ The thing is insane - you can see it for miles away at night... This just saved my bacon multiple times. I keep it in the truck always.... You can't put a price on anybody's safety.” BJ in IN



“ I bought one initially for on-duty safety... it does an amazing job of keeping us safe out on the streets... Also got one for both of my kids' bicycles handlebars... It's the only light I can find on the market that has durability, quality and the brightness...” Mason in CA



“ I ordered one just out of curiosity... and now we're going to make sure every technician on every unit has one of these mandatory .. this device is already saved a life... the car actually stopped... there was actually a guardian angel watching over her... I used mine for a week and a half and somebody said 'Shouldn't you recharge that thing?' And it was still going strong.” David in CA



“ I am blown away by this... I've got plenty of lights on my car but not on me... anytime I step out of the car anymore I turn this thing on.” Jordan in OK

CONTACT INFO:

manishprasad@archangeldevice.com

MORE INFORMATION:

guardianangeldevices.com





-  GuardianAngelDevice
-  GAdevice
-  GuardianAngelDevices
-  guardianangel
-  guardianangeldevice